



Artwork for:	Bramart Healthcare	Swatches
Product Name:	ClinOptic HA 0.21%, 0.4%	
Type:	Leaflet	
Artwork Dimensions:	As per drawing	
Date of first Artwork:	29/01/2021	
Artwork Code:	.V06	
Date of Revision:	24/05/2021	
Reason for Revision:	Content Change	
Colours:	As Swatches	
Font(s):	Dubai	
A/W Software:	Adobe Illustrator 2021	

# ClinOptic HA 0.21%

# ClinOptic HA 0.4%

## Eye Drops

Instructions for use - please read attentively

### COMPOSITION

Sodium chloride, Sodium dihydrogen phosphate dihydrate, Disodium phosphate anhydrous, Sodium hyaluronate, Purified water.  
Preservative-free.

### PURPOSE

**ClinOptic HA 0.21%** drops for dry eyes are intended for relieving mild problems of dry eyes.

**ClinOptic HA 0.4%** drops for dry eyes are intended for relieving severe problems of dry eyes.

Eye drops are designed to protect, moisten and lubricate the eye. Application of the drops provides fast relief of eye discomfort alleviating problems caused by dry eyes and to prevent further complications.

Eye dryness may occur due to:

- Disorder of the tear film caused by tear deficiency or their profuse evaporation which can lead to damage of the ocular surface and symptoms of discomfort
- Environmental conditions (central heating, air conditioners, fluorescent lighting, smoke and wind)
- Prolonged computer work
- Use of decongestant eye drops
- Ageing (75% of population over the age of 65 suffers from the dry eye syndrome)
- Wearing contact lenses
- Surgical treatments or damage to the eye
- Gender (hormone-related changes in women during pregnancy, breastfeeding, menstruation or menopause)
- Use of medicinal products (antidepressants, hypertension treatment, contraception)
- Diseases (rheumatoid arthritis, diabetes, asthma, diseases of the thyroid gland, glaucoma)

**ClinOptic HA 0.21%** drops for dry eyes can also be used whilst wearing contact lenses.

**ClinOptic HA 0.4%** are viscous drops which makes sodium hyaluronate last longer on the ocular surface, thus providing prolonged moistening and enhanced protection. While using ClinOptic HA 0.4% drops for dry eyes, it is recommended to take out contact lenses for 15 minutes during instillation.

Sodium hyaluronate is present in the aqueous and vitreous humour of the eye. Whilst using **ClinOptic HA** drops for dry eyes, with each blink of the eye, sodium hyaluronate creates a protective film over the ocular surface. In that way it removes the sense of dryness, sandiness and irritation. They are also used after surgical treatments and for dry eyes resulting from applying anti-inflammatory medical products to the eye (after consultations with the doctor).

### WARNINGS AND PRECAUTIONS

Do not use **ClinOptic HA**:

- In the case of hypersensitivity (allergy) to sodium hyaluronate or any other ingredient of **ClinOptic HA** eye drops.

In the case of an allergic reaction, stop using the product immediately and contact a doctor.

Other remarks:

- If you notice that the **ClinOptic HA** bottle or applicator is damaged do not use the product.
- To ensure safe application and hygiene, each bottle should be used by one person only.
- There are no known interactions between **ClinOptic HA** eye drops and contact lens solutions, other eye drops or topical eye ointments. If you use another eye product, wait at least 15 minutes between applications.

Note:

**ClinOptic HA 0.4%** can momentarily blur vision. It is therefore recommended that during this short period of time you refrain from driving a car or operating a vehicle/ machine but wait until your sight becomes sharp again.

### PRODUCT SAFETY

- The dropper technology includes a filter which makes the product safe for use as it prevents microbial contamination of the solution even after first opening.

666



666



666



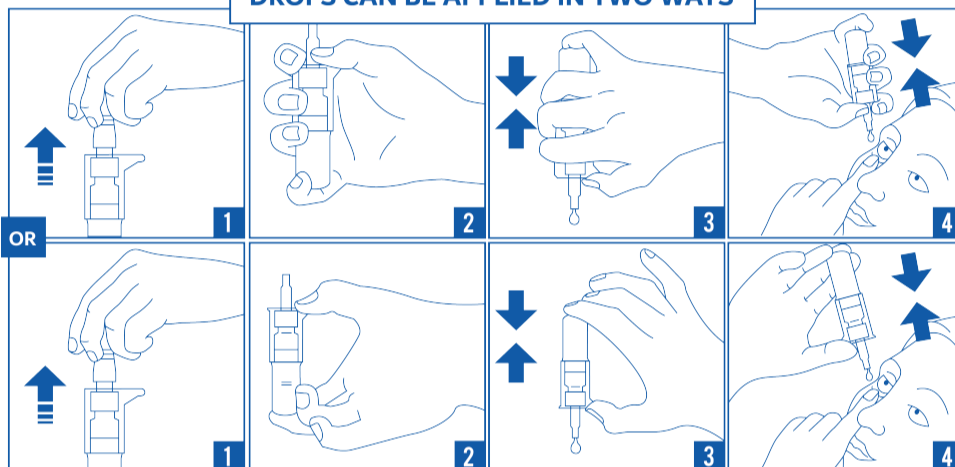
- The product does not contain preservatives, which reduces the possibility of irritation and damage to the surface of the eye.
- The product is generally well tolerated. However, if you notice any side effects, contact your doctor or pharmacist.

### INSTRUCTIONS FOR USE

The eye drops can be used several times a day, as necessary. With correct use, one bottle is enough for 30 days of use. For prolonged use, please consult your doctor.

Instil 1-2 drops into the eye, blink several times so that the solution is distributed equally over the ocular surface. The drops do not contain preservatives and are not harmful when applied to the surface of the eye.

#### DROPS CAN BE APPLIED IN TWO WAYS



1. Remove the stopper from the pump.
2. Grasp the pump with your hand as shown in Image 2.
3. Turn the bottle upside down and activate the pump until the first drop appears.
4. Hold the bottle upside down and by pressing the pump, instil the prescribed number of drops into the eye.

### EXPIRY DATE

- Printed on the packaging.
- Expiry date after opening is 180 days.
- Do not use the product after its expiry date.

### STORAGE

- Store the product below 30°C in original packaging.
- Keep out of sight and reach of children.

### PACKAGING

10 ml

Try the other dry eye drops from the **ClinOptic HA** product line:

PRODUCT	PURPOSE	COMPOSITION	CAUSE OF DISTURBANCES	MODE OF APPLICATION	USE WITH CONTACT LENSES	FEELING AFTER APPLICATION
ClinOptic HA 0,1%	Relieving milder dry eye problems	Sodium Hyaluronate 0,1%	Wearing soft contact lenses, external factors (dry air, smoke), foreign object	Apply 1-2 drops in the eye, several times a day or as required	Yes	Immediate refreshment and pleasant feeling of moistening
ClinOptic HA 0,21%	Relieving less severe dry eye problems	Sodium Hyaluronate 0,21%	Long-lasting computer work, wearing lenses, allergy, foreign object, external factors (dry air, smoke)		Yes	Immediate refreshment and long-lasting feeling of moistening
ClinOptic HA 0,4%	Relieving more severe dry eye problems	Sodium Hyaluronate 0,4%	Aging, pharmacotherapy, aggressive external factors (wind, sun, dry air)		No	Immediate relief and long-lasting feeling of comfort and lubrication. The product can momentarily blur vision.

### DISTRIBUTOR IRELAND

Pemberton Laboratories  
174 Walkinstown Road  
Dublin  
Ireland

### DISTRIBUTOR UK

Galen Limited  
Seagoe Industrial Estate  
Craigavon, Northern Ireland  
BT63 5UA, UK

### MANUFACTURER

Jadran-Galenski Laboratorij d.d.  
Svilno 20, 51000 Rijeka,  
Croatia

Revision Date: May 2021



JGL ITEM CODE

666

666